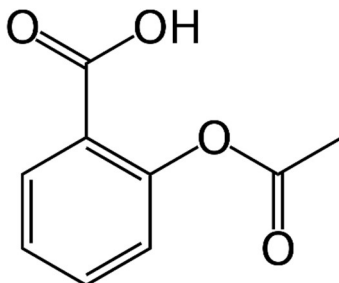


Acetylsalicylic acid
250 mg Tablet
Co-formulated with 250 mg Acetaminophen and 65 mg Caffeine

Structure:



Molecular Formula and Mass: C₉H₈O₄ – 180.158

Category: Nonsteroidal anti-inflammatory drug

Sample:

Grind one tablet and dissolve in 100 mL of methanol. Shake for at least 10 min and filter. Final concentration of the sample solution is 2.50 mg/mL, which is the required concentration representing 100%.

Standards:

High Standard:

The high limit is 115%; therefore the concentration of the high standard is 2.50 mg/mL × 115% = 2.88 mg/mL. Weigh approximately 71.9 mg of standard and dissolve it in 25.0 mL of methanol. If you weighed 72.0 mg of standard, dissolve it in: 72.0 mg ÷ 2.88 mg/mL = 25.0 mL of methanol. This makes the high standard solution concentration equal to 2.88 mg/mL, which is 115%.

Low Standard:

The low limit is 85%; therefore the concentration of the low standard = 2.50 mg/mL × 85% = 2.13 mg/mL. Dilute 1.70 mL of high standard to 2.30 mL by adding 0.60 mL of methanol. This gives a concentration of 2.88 mg/mL × 1.70 mL ÷ 2.30 mL = 2.13 mg/mL, which is 85%.

Spotting:

Spot on the 5 × 10 cm silica gel TLC aluminum plate with 3.00 µL aliquots as follows:

Left spot	low standard (85%) = 6.39 µg
Center Spot	100% sample = 7.50 µg
Right Spot	high standard (115%) = 8.64 µg

Development:

Mix 38.0 mL of ethyl acetate and 2.00 mL of acetic acid. Develop the plate in a small glass chamber with approximately 20.0 mL of this solution until the solvent front reaches within 1 cm of the top of the TLC plate.

(R_f = 0.57)

Detection:

UV:

Dry the plate and observe under UV light at 254 nm. Observe the intensities and sizes of the spots.

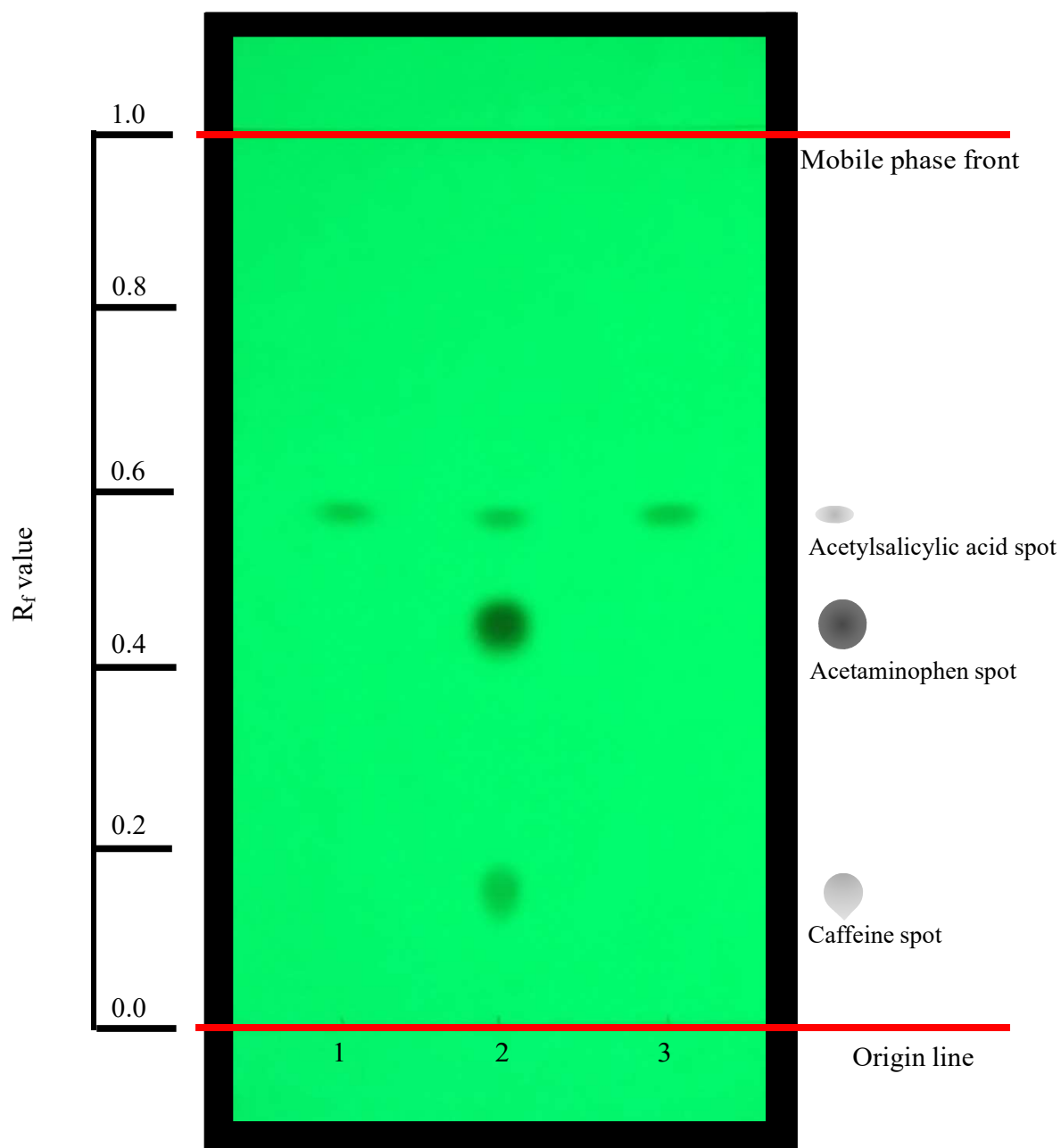


Plate observed under ultraviolet light at 254 nm.

Lane 1: Low standard (85%) = 6.39 μg

Lane 2: 100% sample = 7.50 μg

Lane 3: High standard (115%) = 8.64 μg

Developed and tested by Bingsong Zeng, Yiru Gu, and Joseph Sherma

Department of Chemistry, Lafayette College, Easton, PA, USA

July, 2018

The research of Bingsong Zeng and Yiru Gu was supported by Lafayette College EXCEL Scholar Program